

Rule 7-5-2 thru 7-5-5:

Established four throw-in spots:

- the nearest 28-foot mark along each sideline or
- the nearest spot 3 feet outside the lane line on the end line

These spots are used when a team gains or retains possession in their frontcourt after the opponent commits a violation, a common foul prior to the bonus, or the ball becomes dead (i.e. inadvertent whistle or held ball).

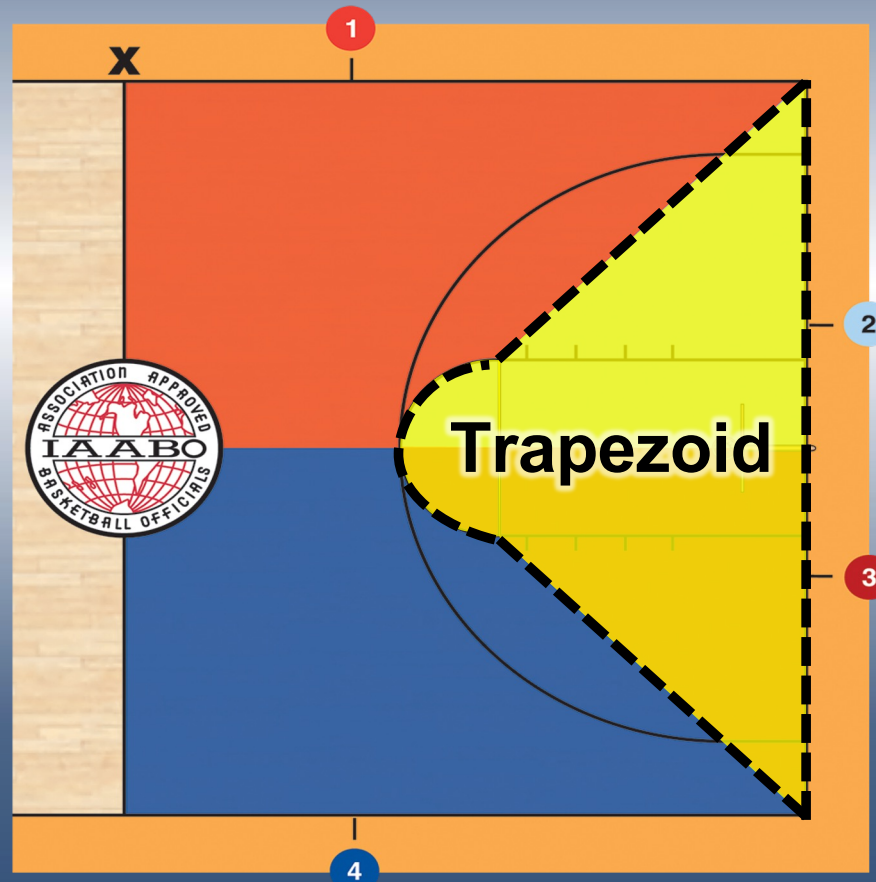


Rationale:

Simplifies throw-in procedure when a team gains or retains possession for situations other than an out-of-bounds throw-in.



The Trapezoid



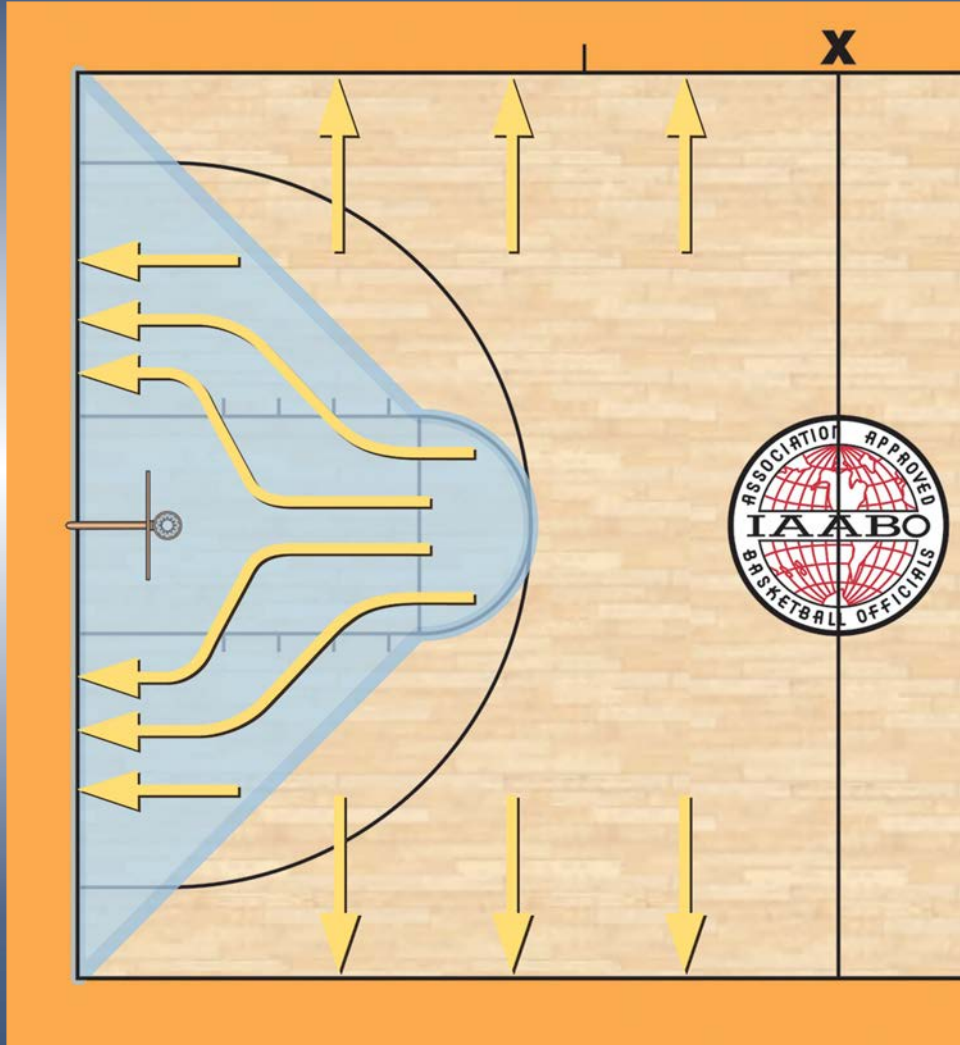
Will the ensuing throw-in be awarded
in the frontcourt?

NO



The designated spot throw-in will be
at the **nearest spot** to the foul or violation.





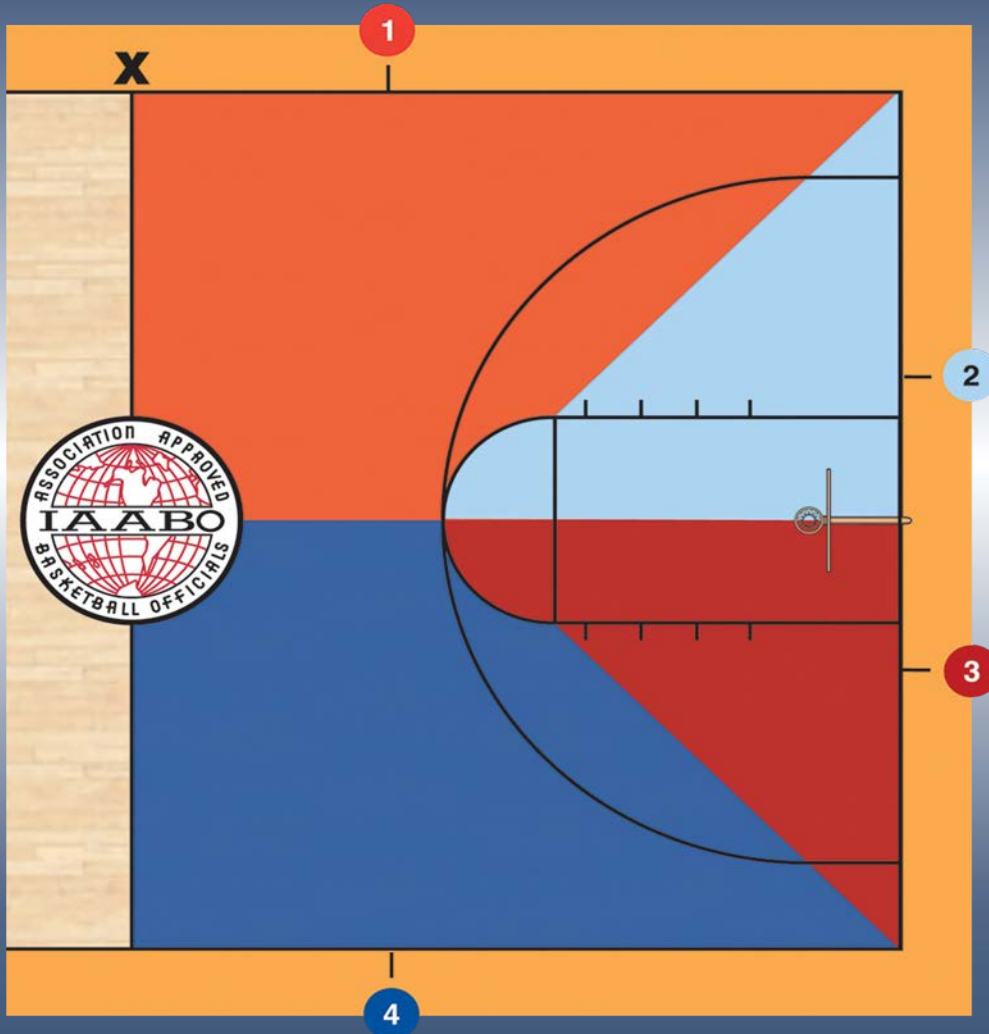
Will the ensuing throw-in be in that team's frontcourt
for any reason (other than an out-of-bounds violation)?

YES



The designated spot throw-in will be at
**1 of the 4 designated front court
throw-in spots.**







28' mark

28' mark





FRONTCOURT: Is the ensuing throw-in a result of the ball going out-of-bounds?

YES



The designated spot throw-in will be at the **nearest spot** to where the out-of-bounds violation occurred.



FRONTCOURT ONLY: Is the ensuing throw-in
a result of the ball going out-of-bounds?

NO



Is the ensuing throw-in a result of a foul or violation by the
defense?




YES



The designated spot throw-in will be at
1 of the 4 designated front court throw-in spots.

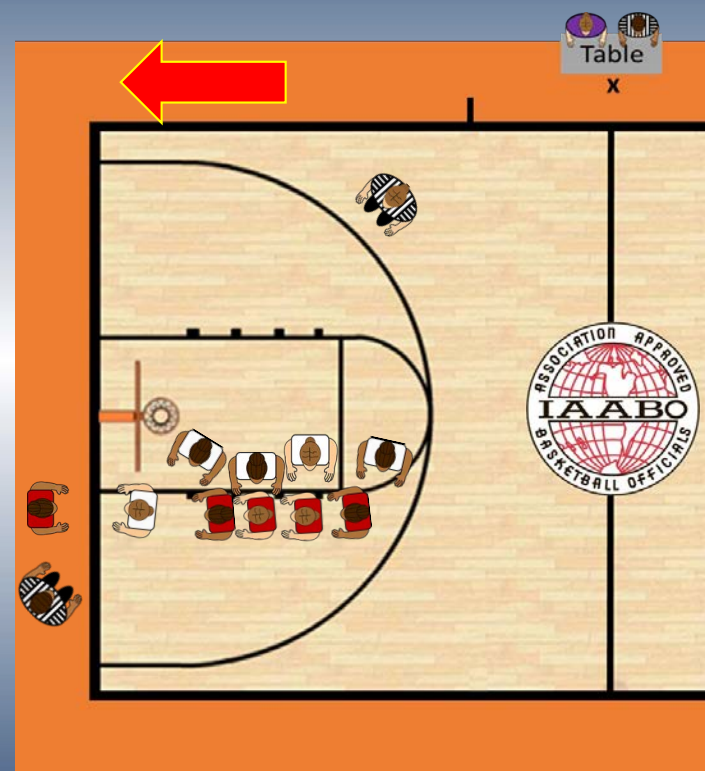
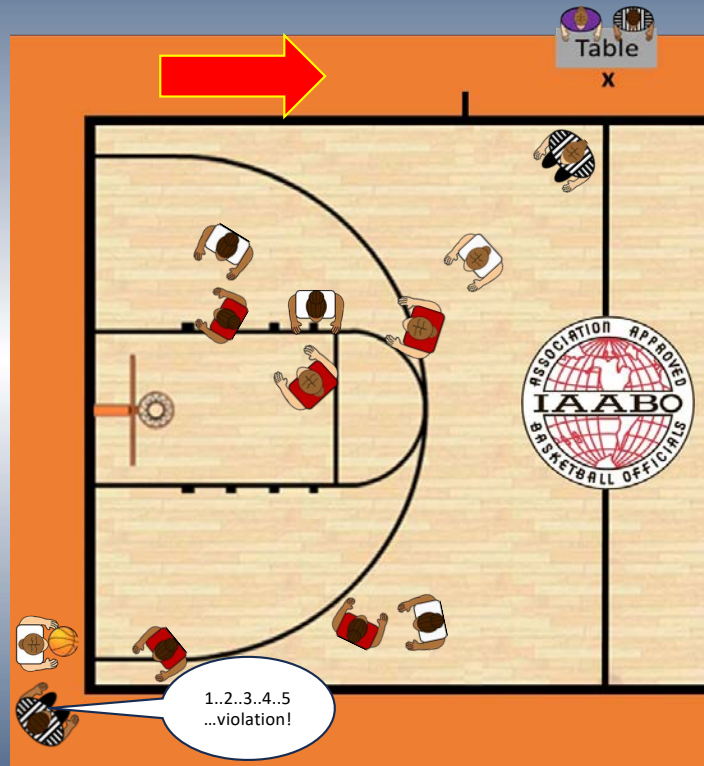


THROW-IN LOCATION SUMMARY

<u>Cause of Dead Ball</u>	<u>Ensuing Throw-in Location</u>	<u>Visual Reference</u>
<ul style="list-style-type: none"> • Out-of-bounds violations 	<p>Frontcourt and Backcourt</p>	
<ul style="list-style-type: none"> • Foul • Violation • Held ball • Other stoppage 	<p>Backcourt</p>	
<ul style="list-style-type: none"> • Foul • Violation • Held ball • Other stoppage 	<p>Frontcourt</p>	



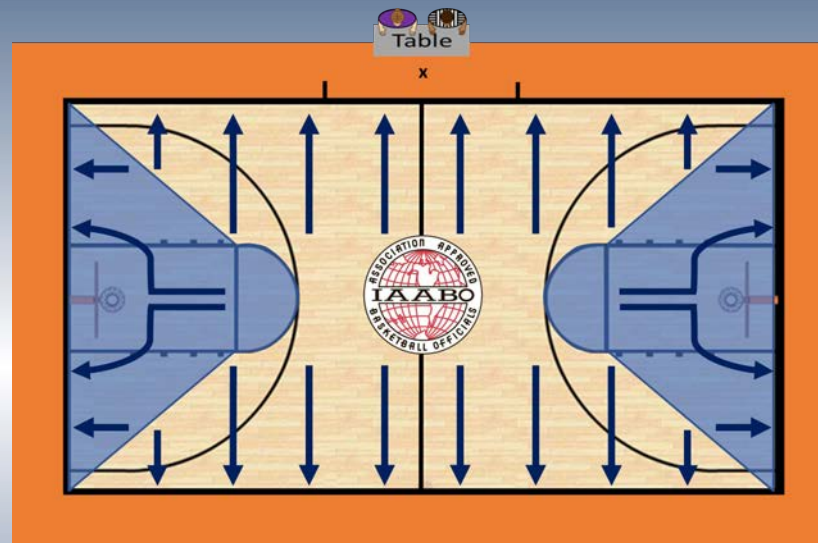
Backcourt Throw-in, Throw-in Violation



Because the violation occurred in backcourt, the ball will be awarded in the frontcourt, the designated spot moves to the nearest of the 4 designated frontcourt throw-in spots.



Out-of-Bounds Violations & Backcourt Throw-ins



- The throw-in spots for **all out-of-bounds** violations (in both the frontcourt and the backcourt) will remain at the spot nearest to where the violation occurred.
- When a team is awarded a designated-spot throw-in from their backcourt, the ensuing throw-in will be from the spot nearest to where the violation, foul or other stoppage occurred.



Summary

- **Correct application of the throw-in spot is very important.**
- **Read and re-read your Rules Guide (9:2), pages 65-68.**
- **Study video plays.**
- **Ask questions if needed.**
- **Make this part of your pre-game with your partners until you and your crew have mastered it.**

