



# 2024-2025 – Summary of Uniforms, Equipment and Apparel Items

(IAABO Chapter 2, NFHS 3-4, 3-5, 3-6)

Rule changes highlighted in yellow



## HEAD DECORATION

Adornments made of hard material are permitted provide they are securely fastened close to the head and do not present an increased risk to the player, teammates or opponents.



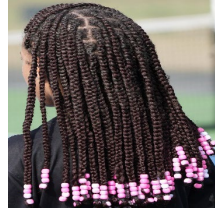
LEGAL



LEGAL



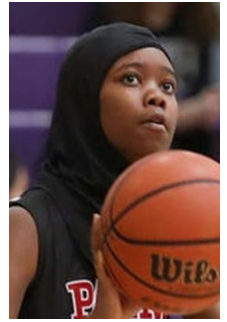
LEGAL



ILLEGAL

## HEAD COVERINGS

- Head coverings worn for religious reasons shall not be made of abrasive or hard materials.
- Must fit securely so it is highly unlikely to come off during play.



LEGAL

## HEADBANDS

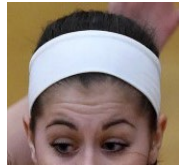
- May not be knotted or have extensions, even if extensions are tucked in.
- May only have one logo.
- May be up to 3 inches wide.



ILLEGAL



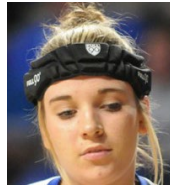
ILLEGAL



LEGAL

## HEADWEAR

If a participant is required by a licensed medical physician to cover the head with a covering or wrap, the physician's statement is required before the state association can approve a covering or wrap.

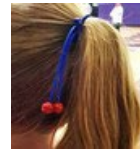
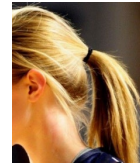


LEGAL with approval from State Association

## LEGAL

## HAIR CONTROL DEVICES

- Item that goes around hair only.
- No color restrictions.
- Must be of soft material.
- Beads are prohibited.



ILLEGAL

## UNDERSHIRTS

- All teammates must have the same color undershirt.
- One teammate may have short sleeves, another may have long sleeves.
- Sleeves' edges may not be frayed and must be the same length per player.
- The undershirt may have only one visible logo.

### Light Jerseys



LEGAL

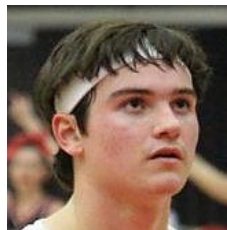


ILLEGAL - color

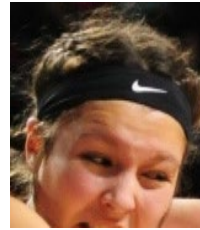
- Undershirts worn under the team's light jerseys must be a single solid color similar to the torso of the jersey.

## HEADBANDS, WRISTBANDS, ARM/LEG SLEEVES, COMPRESSION SHORTS and TIGHTS

- Must be a single solid color: white, black, beige, or the predominant color of the jersey.
- May only have one visible logo.



LEGAL



LEGAL



LEGAL



LEGAL

- All such articles for all teammates must be the same color.

### Dark Jerseys



LEGAL



LEGAL



ILLEGAL - color

- Undershirts worn under the team's dark jerseys may be black or a single solid color similar to the torso of the jersey.

### MEMORIAL PATCH

- Only one patch allowed.
- Not a number.
- Above neckline or in side insert.
- No more than 4 in<sup>2</sup>



LEGAL

### JERSEY MANUFACTURER'S LOGO

May be worn anywhere on the jersey provided it does not exceed 2¼ in<sup>2</sup> or interfere with visibility of number.



LEGAL

### UNIFORMS

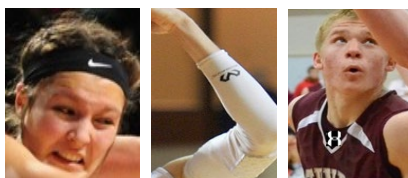
A school logo/mascot may be centered directly above the number in place of identifying name(s).



LEGAL

### LOGOS

One visible manufacturer's logo is permitted on any apparel item, limited to 2¼ in<sup>2</sup>.



LEGAL

LEGAL

LEGAL

### BOTTOMS

- Multiple styles of uniform bottoms may be worn by teammates, but they must all be like-colored and adhere to uniform rules regarding logos and trademarks.
- May be folded or rolled at the natural waistband seam.
- May have only one visible manufacturer's logo.



These bottoms would all be **LEGAL** for one team to wear.

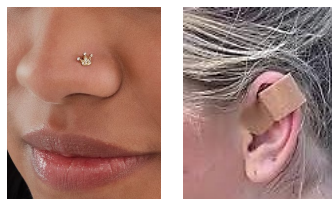
### RELIGIOUS ITEMS and MEDICAL ALERT

- Not considered jewelry.
- Religious item must be taped and worn under the uniform.
- A medical alert must be taped and may be visible.



### JEWELRY

- A player is **not** allowed to enter the game wearing jewelry.
- May **not** be taped.



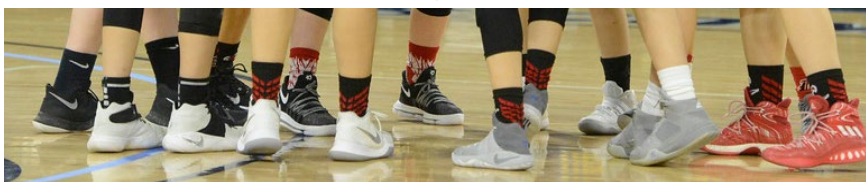
### BRACES

- Manufactured knee and ankle braces **do not** need to meet any color restrictions.
- A brace is defined as anything **worn for a medical purpose** to increase stability.



### SHOES AND SOCKS

No color or logo restrictions.



### WRISTBANDS

- Must be made of absorbent material.
- Must be worn below elbow.
- Only one per arm.



← **ILLEGAL**

Color of headband and leg sleeves do not match.



← **ILLEGAL**

Logo is too big.



↑ **ILLEGAL** ↓

Sleeves must be a single solid color.



Silicone bands

**ILLEGAL** ↓



**LEGAL** →

Color of headband and leg sleeves match.

